

COOKE LENSES



FOR PHOTOGRAPHY

C 56/368

COCKE LENSES



FOR PHOTOGRAPHY



STOUGHTON STREET WORKS, LEICESTER.
Offices and North Wing. Main Factory Building behind.

TAYLOR, TAYLOR, & HOBSON, LTD
SCIENTIFIC INSTRUMENT MAKERS,
STOUGHTON STREET WORKS,
LEICESTER,
ENGLAND.

Telegrams: "LENSES, LEICESTER." Telephone: Nos. 134 and 135.

FOR LONDON BUSINESS ONLY:
18 BERNERS STREET, LONDON, W.
Telegrams: "ILLIQUO, LONDON." Telephone 4591 Gerrard.

AMERICAN AGENTS:
THE TAYLOR-HOBSON CO.,
1135 BROADWAY. NEW YORK, U.S.A.

1912.

26th EDITION.
CANCELLING ALL PREVIOUS EDITIONS.
ENTERED AT STATIONERS' HALL.
COPYRIGHT.

W.D.
8°
923
BR

COOKE LENSES

HINTS ON SELECTION.

It has been fully recognised for a long time that it is impossible to produce one lens that will meet all the varied requirements of modern photography. For instance, portraiture requires a lens possessing great speed combined with good definition over a limited area, whereas for wide angle work the primary essential is extreme covering power.

To assist our customers in selecting the most suitable lens for their purpose we give below a short explanation of the capabilities of each series.

SERIES IIA. F/3'5—PAGE 4. In the design of these lenses our chief consideration has been the question of **speed**, and whilst covering their own sizes of plates with a maximum of efficiency these large aperture lenses are not suitable for subjects where a very wide angle of view is required, neither must they be expected to give great depth at full aperture because, owing to the unalterable law of optics, depth of focus decreases as the aperture increases.

SERIES II. F/4'5—PAGE 4. The above remarks also apply in a great measure to this Series, except that they are a little less rapid. As they can be fitted to most of the well-known reflex cameras they are **specially useful to press workers.**

SERIES IV. F/5'6—PAGE 5. These lenses are peculiarly well adapted for instantaneous work with between-lens shutters and for **colour photography.** For the latter purpose colour screens can be used without unduly prolonging the exposure.

SERIES III. F/6'5—PAGE 7. These may be considered as **universal lenses** suitable for general work, such as Landscapes, Street Scenes, etc. If slightly stopped down they may be used as wide angle lenses for architectural work on plates many sizes larger than those for which they are listed.

SERIES IIIA. F/6'5—PAGE 9. These are mounted in cells to screw direct into the most popular shutters, and are specially suitable for **Kodak and other compact Hand Cameras.** They are excellent lenses for use at full aperture on the plates for which they are listed, but cannot be used on larger plates like the Series III.

SERIES V. F/8—PAGE 11. As these give keen definition at every point of the plate at full aperture they are in reality much faster instruments than many lenses marked with the same aperture, which require stopping down to secure sharpness. These lenses are specially suitable for **commercial photography.**

EXTENSION LENSES—PAGES 13-15. These have been designed to lengthen the focus of any normal Cooke Lens, and are particularly useful in **landscape work.**

COOKE PORTRAIT LENSES—PAGES 16-19, have been designed specially for high-class **studio work.** Negatives can be secured possessing beautiful roundness and modelling which call for very little retouching.

COOKE PRIMOPLANE LENSES—PAGE 21, have been designed specially for **wide angle work.** Their large aperture is of great convenience for focussing in dull interiors.

TAYLOR, TAYLOR & HOBSON, LTD

LEICESTER.

LONDON. ————— NEW YORK



COOKE LENSES

F/3.5 AND F/4.5

FOR

REFLEX AND FOCAL-PLANE
CAMERAS.

THE remarkable speed of these lenses makes them invaluable for Press Photography and similar work, enabling fine pictures to be taken at times when less rapid lenses would fail utterly.

For larger lenses in these Series, see page 16.



SERIES IIA.—F/3.5.

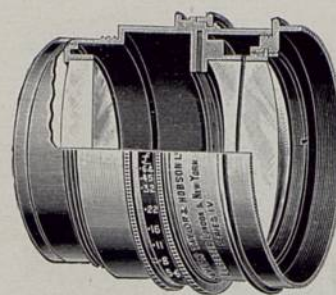
Code.	Approximate Equivalent Focus.	Focus measured from Flange Shoulder.	Plate covered at full Aperture.	Diameter of Flange Screw.	Diameter of Hood.	PRICE with Flange.
ENOISELER	5	4.68	4½ × 3¼	1¾	1.8	£ 6 s. d. 0 0 0
ENOLOGIA	6	5.8	5 × 4	2¼	2.35	7 0 0
ENODATIUS	7	6.75	5½ × 3½	2½	2.8	8 10 0
ENOLOGISTA	8	7.75	6½ × 4¾	2¾	2.8	10 0 0

SERIES II.—F/4.5.

Code.	Approximate Equivalent Focus.	Focus measured from Flange Shoulder.	Plate covered at full Aperture.	Diameter of Flange Screw.	Diameter of Hood.	PRICE with Flange.
FEBRATICOS	4	3.8	3¼ × 3¼	1½	1.40	£ 4 s. d. 2 0 0
FEBRATIDUM	5	4.6	4¼ × 3¼	1½	1.50	4 17 0
FIGULABAM	5½	5.15	4¼ × 3¼	1½	1.65	5 5 0
FEDORENTO	6½	6.35	5 × 4	1¾	1.80	5 9 6
FILETEANDO	7	6.72	5½ × 3½	1¾	1.90	6 12 6
FEGATOSO	8	7.9	6½ × 4¾	2¼	2.35	7 12 6

DIMENSIONS ARE IN INCHES.
Paired for Stereoscopic work, 5/- extra.

For Prices in Sunk Mounts, see page 12.



COOKE LENSES

SERIES IV.

APERTURE F/5.6.

THESE lenses are designed for high-speed photography with focal-plane Shutters, and for difficult photographs under exceptionally poor conditions of lighting. They give at full aperture perfect definition throughout the sizes of plates specified, and may be specially recommended for enlarging and copying.

Owing to their larger aperture they cannot be used with such good effect as wide angle lenses, but in all other respects they are equal to the Series III.



DIMENSIONS ARE IN INCHES.

Code.	Approximate Equivalent Focus.	Focus measured from Flange Shoulder.	Plate covered at F/5.6.	Plate covered at F/16.	Diameter of Flange Screw	Diameter of Hood.	PRICE with Flange.
FROMENTACE	5	4.65	4¼ × 3¼	5 × 4	1¾	1.15	£ 4 s. d. 9 6
FRONDARIO	6	5.5	5 × 4	7 × 5	1½	1.30	4 19 6
FRONTALERO	8	7.6	6½ × 4¾	8½ × 6½	1¾	1.80	6 6 0
FULICAREM	9½	9	8½ × 6½	10 × 8	2	2.50	9 5 0
FRUCTIFERO	11	10.25	8½ × 6½	12 × 10	2½	2.80	12 14 6
FRUGAGLIA	13	...	10 × 8	14 × 11	3	3.30	15 3 0
FULMICOTON	16	...	12 × 10	15 × 12	3½	3.60	21 3 6
FUMEGAMOS	*18	...	15 × 12	18 × 16	4	4.25	24 4 0

* Made to order only.

Paired for Stereoscopic work, 5/- extra

For Prices in Sunk Mounts, see page 12.

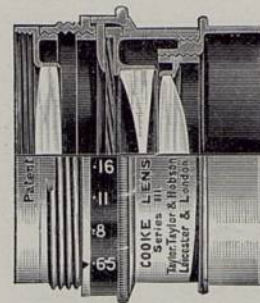


York Minster.



"Expectation."

TAKEN WITH COOKE LENSES.



COOKE LENSES

SERIES III.
APERTURE F/6.5.

THESE lenses are the best for general purposes—landscapes, street scenes and interiors, and for difficult photographs on dull days. For use as wide angle lenses for the photography of interiors and all views which must be taken at short distances they are perfect. They may be focussed at full aperture and afterwards stopped down for the exposure without spoiling the image.

The smaller sizes are specially suitable for roll film and other hand cameras, the larger for portrait groups and commercial work.

DIMENSIONS ARE IN INCHES.

Code.	Approximate Equivalent Focus.	Focus measured from Flange Shoulder.	Plate covered at F/6.5.	Plate covered at F/16.	Diameter of Flange Screw.	Diameter of Hood.	PRICE with Flange.
FIDUCIUM	3	2.75	2½ × 2½	3 × 3	1¼	1.25	£ s. d. 3 4 0
FIDIATURE	4½	3.9	3¼ × 3¼	5 × 4	1¼	1.25	3 14 0
FIDALGOS	5	4.62	4¼ × 3¼	6½ × 4¾	1¼	1.25	4 2 0
FIATAMENTO	5½	4.95	4¼ × 3¼	7 × 5	1½	1.40	4 7 0
FETILLADAS	6¾	5.55	5 × 4	8½ × 6½	1½	1.40	4 12 0
FESTEREMO	7½	6.60	6½ × 4¾	10 × 8	1½	1.65	5 12 0
FESTINABAT	8½	7.50	8 × 5	10 × 8	1½	1.65	6 3 0
FILAGRANA	9½	8.75	8½ × 6½	12 × 10	1¾	1.90	8 14 0

Paired for Stereoscopic work, 5/- extra

For Prices in Sunk Mounts see page 12.



Photo by

"Two's Company, but —— !"

W. Burke, F.R.P.S.

TAKEN WITH A SERIES IIIA. COOKE LENS ON A POST CARD FILM.



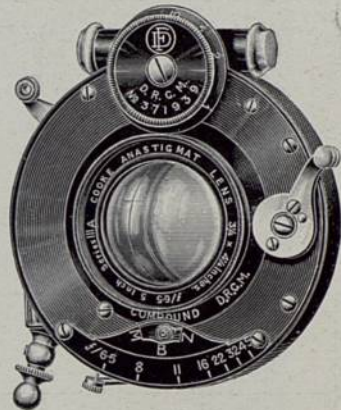
COOKE LENSES

SERIES IIIA.

APERTURE F/6.5.

THESE are a modification of the Series III., designed specially for Kodak and other Hand Cameras with a limited rise of front. Over the sizes of plates listed they give beautiful definition at full aperture.

These lenses are particularly suited for fitting to between-lens shutters.



DIMENSIONS ARE IN INCHES.

Approximate Equivalent Focus.	Focus measured from Back Cell.	Plate covered.	Diameter of Hood.	PRICE.	
				in Compound Shutter.	in Koilos Shutter.
5	4.32	4 $\frac{1}{4}$ × 3 $\frac{1}{4}$	1.15	£ 5 15 0	£ 5 15 0
6 $\frac{1}{8}$	5.82	5 × 4	1.30	6 10 0	6 10 0
7 $\frac{1}{2}$	6.35	6 $\frac{1}{2}$ × 4 $\frac{3}{4}$	1.30	7 14 0	7 12 0
8 $\frac{1}{2}$	7.20	8 × 5	1.65	8 9 0	8 9 0

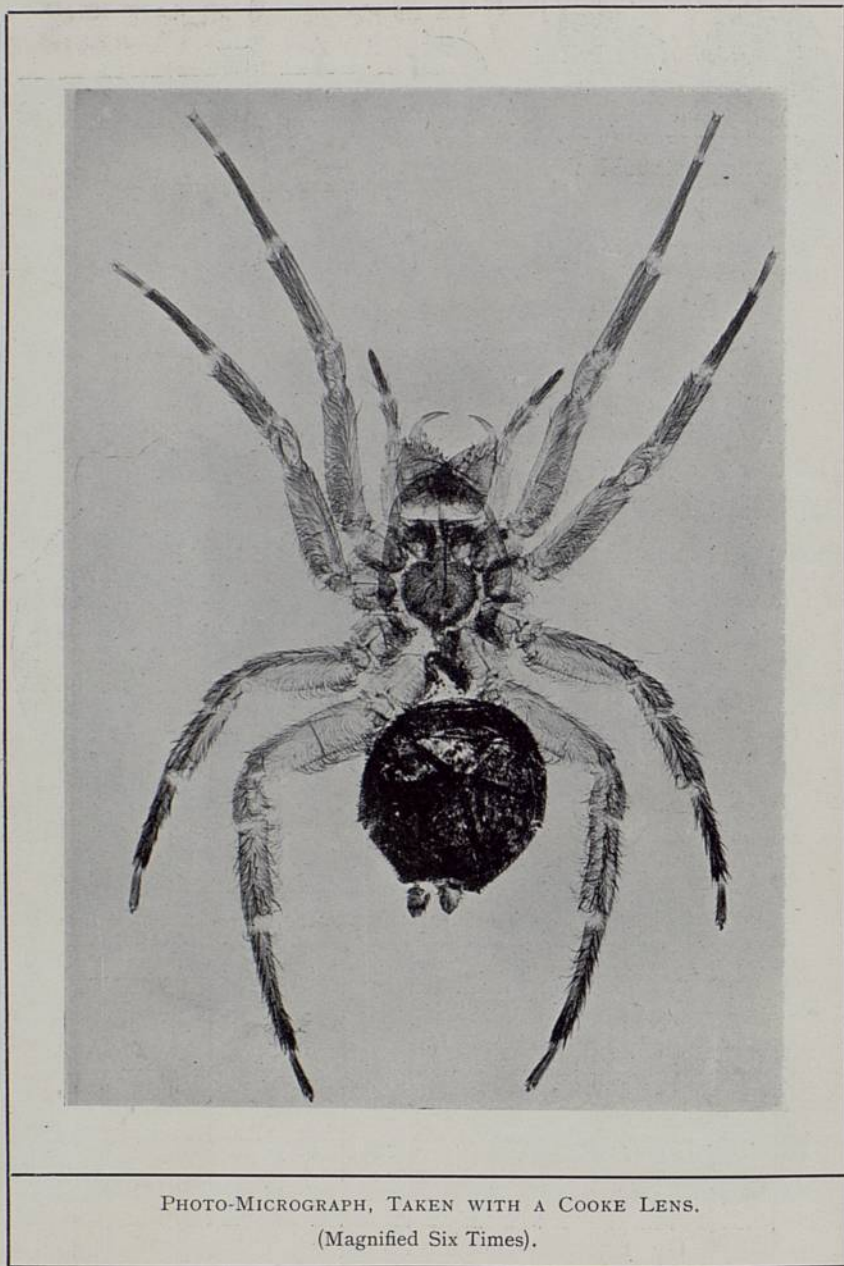


PHOTO-MICROGRAPH, TAKEN WITH A COOKE LENS.
(Magnified Six Times).



COOKE LENSES

SERIES V.
APERTURE F/8.

THESE lenses are suited for the same work as the Series III. and give the same results, except that they are less rapid. They are unsurpassed for stationary subjects, such as machinery and architecture, for which a reduced aperture is needed to secure depth, but for which very short exposures are not required. In fact they are the best lenses for everything requiring microscopically fine definition under average conditions of lighting.

DIMENSIONS ARE IN INCHES.

Code.	Approximate Equivalent Focus.	Focus measured from Flange Shoulder.	Plate covered at F/8.	Plate covered at F/16.	Diameter of Flange Screw.	Diameter of Hood.	PRICE with Flange.
FAVONIANA	7½	6·9	6½ × 4¾	10 × 8	1½	1·40	f s. d. 4 12 0
FERVEDOURO	9	8·3	8 × 5	12 × 10	1½	1·65	5 12 0
FERRUGINIS	11	10·0	8½ × 6½	15 × 12	1¾	1·90	7 17 0
FERRICOQUE	13	11·9	10 × 8	17 × 14	2	2·50	10 2 0
FERMAGLIO	16	15·0	12 × 10	20 × 18	2½	2·80	15 2 6
FERCULUM	18	16·5	15 × 12	24 × 20	3	3·30	18 13 0
FENUSCULO	*25	22·5	18 × 16	27 × 24	4	4·25	30 4 0
FENOGREGO	*30	...	24 × 20	Proportionately larger.	5	5·25	42 5 0
FUNALIBUS	*36	...	27 × 24		6	6	56 6 0

* Made to order only.

Paired for Stereoscopic work, 5/- extra.



COOKE LENSES

IN SUNK MOUNTS.

To meet the growing demand for Lenses in Sunk Mounts, suitable for collapsible and reflex types of Cameras, we have designed this special form of mounting and shall be pleased to supply Lenses in such mounts at the following prices:

DIMENSIONS ARE IN INCHES.

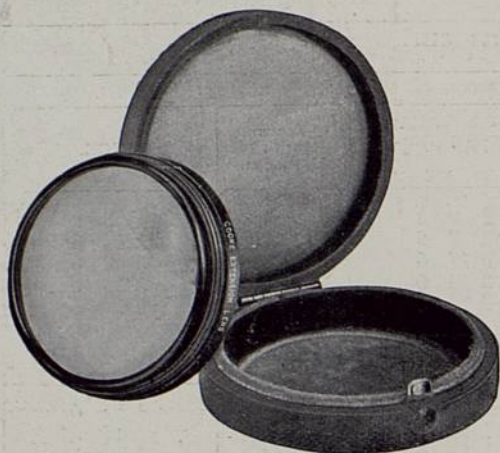
Series.	Code.	Approximate Equivalent Focus.	Focus from back of Flange.	Plate covered at full Aperture.	Diam. of Flange Screw.	Diameter of Hood.	PRICE with Flange.
Series IIA. F/3.5.	TOLVANERA	5	5'35	4 $\frac{1}{4}$ × 3 $\frac{1}{4}$	2	1'65	£ s. d. 6 8 0
	TOMBOLIATE	6	7'23	5 × 4	2 $\frac{1}{2}$	2'35	7 13 0
	TONACHINO	7	8'25	5 $\frac{1}{2}$ × 3 $\frac{3}{4}$	3	2'60	9 5 0
	TONDARELLO	8	9'20	6 $\frac{1}{2}$ × 4 $\frac{3}{4}$	3	2'60	10 17 6
Series II. F/4.5.	TITIMAGLIO	5	5'52	4 $\frac{1}{4}$ × 3 $\frac{1}{4}$	1 $\frac{1}{2}$	1'30	5 5 0
	TOCCALAPIS	5 $\frac{1}{2}$	6'36	4 $\frac{1}{4}$ × 3 $\frac{1}{4}$	2	1'65	5 15 0
	TOCHEDAD	6 $\frac{1}{2}$	7'44	5 × 4	2	1'65	6 2 6
	TOGATULUS	7	8'25	5 $\frac{1}{2}$ × 3 $\frac{3}{4}$	2 $\frac{1}{4}$	1'90	7 6 0
	TOLDADURA	8	9'25	6 $\frac{1}{2}$ × 4 $\frac{3}{4}$	2 $\frac{1}{2}$	2'35	8 10 0
	Series III. F/6.5.	TONITRALE	5	5'28	4 $\frac{1}{4}$ × 3 $\frac{1}{4}$	1 $\frac{1}{2}$	1'25
TONTISIMO		5 $\frac{1}{2}$	5'6	4 $\frac{1}{4}$ × 3 $\frac{1}{4}$	1'59	1'40	4 12 6
TOPIARIA		6 $\frac{3}{4}$	6'5	5 × 4	1'59	1'40	4 17 6
TORACULUM		7 $\frac{1}{2}$	7'76	6 $\frac{1}{2}$ × 4 $\frac{3}{4}$	2	1'65	6 0 0
TORBIDIATE		8 $\frac{1}{2}$	8'8	8 × 5	2	1'65	6 13 6
Series IV. F/5.6.	TORIONDEZ	5	5'4	4 $\frac{1}{4}$ × 3 $\frac{1}{4}$	1 $\frac{1}{2}$	1'15	4 15 0
	TORNAGUSTO	6	6'5	5 × 4	1 $\frac{1}{2}$	1'30	5 7 6
	TORNAPUNTA	8	8'5	6 $\frac{1}{2}$ × 4 $\frac{3}{4}$	2 $\frac{1}{4}$	1'90	6 19 0

The above can also be fitted with a focussing movement at a uniform charge of £1-0-0 extra.

PRICES OF COOKE EXTENSION LENSES

SERIES IIA.—F/3'5.				
Approximate Focus of Normal Lens.	50% EXTENSION.		100% EXTENSION.	
	Focus with Extension.	PRICE.	Focus with Extension.	PRICE.
5	(F/8). 7'5	£ s. d. 2 0 0	(F/11). 10'0	£ s. d. 2 5 0
6	9'3	2 7 6	12'4	2 12 6
7	10'9	2 17 6	14'6	3 2 6
8	12'0	3 10 0	16'0	3 15 0
10 $\frac{1}{2}$	15'6	5 10 0	20'8	5 15 0
SERIES II.—F/4'5.				
4	(F/8). 6'1	1 7 6	(F/11). 8'2	1 12 6
5	7'5	1 10 0	10'0	1 15 0
5 $\frac{1}{2}$	8'55	1 13 6	11'4	1 18 6
6 $\frac{1}{2}$	9'9	1 15 0	13'2	2 0 0
7	10'9	2 0 0	14'6	2 5 0
8	12'3	2 10 0	16'4	2 15 0
SERIES III.—F/6'5.				
3	(F/11). 4'6	0 16 0	(F/16). 6'2	1 1 0
4 $\frac{1}{2}$	6'6	0 18 0	8'8	1 3 0
5	7'6	1 0 0	10'2	1 5 0
5 $\frac{1}{2}$	8'5	1 2 0	11'4	1 7 0
6 $\frac{3}{8}$	9'6	1 3 0	12'8	1 8 0
7 $\frac{1}{2}$	11'7	1 7 0	15'6	1 12 0
8 $\frac{1}{2}$	12'7	1 10 0	17'0	1 15 0
9 $\frac{1}{2}$	14'2	1 18 0	19'0	2 3 0
11	17'0	2 12 0	22'6	2 17 0
13	20'0	3 10 0	26'6	3 15 0
SERIES IV.—F/5'6.				
5	(F/11). 7'9	1 4 6	(F/16). 10'6	1 9 6
6	9'3	1 4 6	12'4	1 9 6
8	12'7	1 11 6	17'0	1 16 6
9 $\frac{1}{2}$	14'5	2 6 6	19'4	2 11 6
11	16'6	3 3 0	22'2	3 8 0
13	19'6	3 15 0	26'2	4 0 0
SERIES V.—F/8.				
7 $\frac{1}{2}$	(F/16). 12'0	1 2 0	(F/22). 16'0	1 7 0
9	13'9	1 7 0	18'5	1 12 0
11	17'0	1 18 0	22'6	2 3 0
13	20'0	10 0	26'6	2 15 0

COOKE EXTENSION LENSES



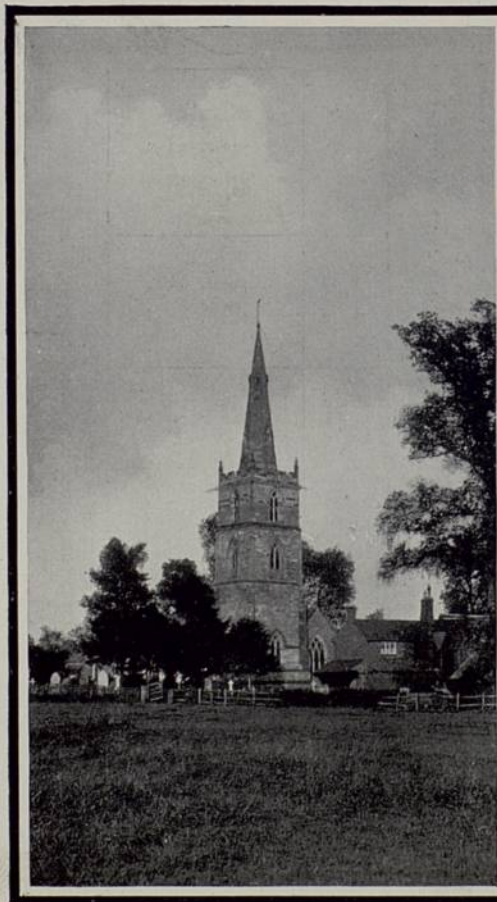
THESE Extension lenses are designed to increase the focus and scale of the normal lens either 50 or 100 per cent. by simply extending the bellows. Thus, for example, if the normal lens projects on the plate an image 2 inches long, with a 50 per cent. Extension lens fitted an image 3 inches long will be projected, or 4 inches long with a 100 per cent.

Extension lens, with the camera in the same place, but sufficient extra camera extension must of course be available.

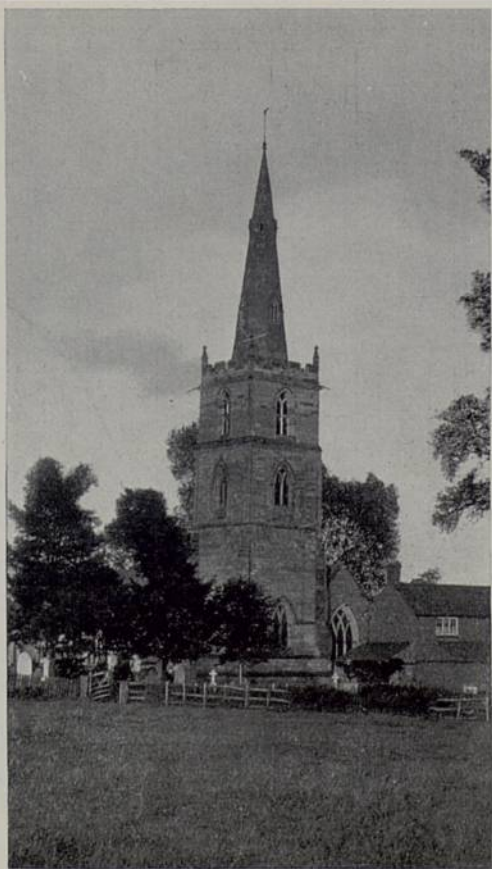
The Extension lenses are not intended to cover larger plates than those which their respective normal lenses cover with large apertures, nor must they be expected to do work quite equal to that of a normal Cooke lens of the increased focal length. The Extension lenses are designed more particularly for landscape and other long distance work, in which it is desired to give due prominence to distant objects. The set of illustrations given on the opposite page show clearly the advantages afforded by these supplementary lenses for the purpose mentioned.

They can be adapted to all Cooke lenses—new or old—but in the case of Cooke lenses already issued it is best, when ordering the extension, to send us the original Cooke lens, both to have the Extension lens properly adjusted and to have its separate index scale engraved upon the mount. If it be impossible to send us the original lens, then it is necessary to quote the number which appears on the original lens mount.

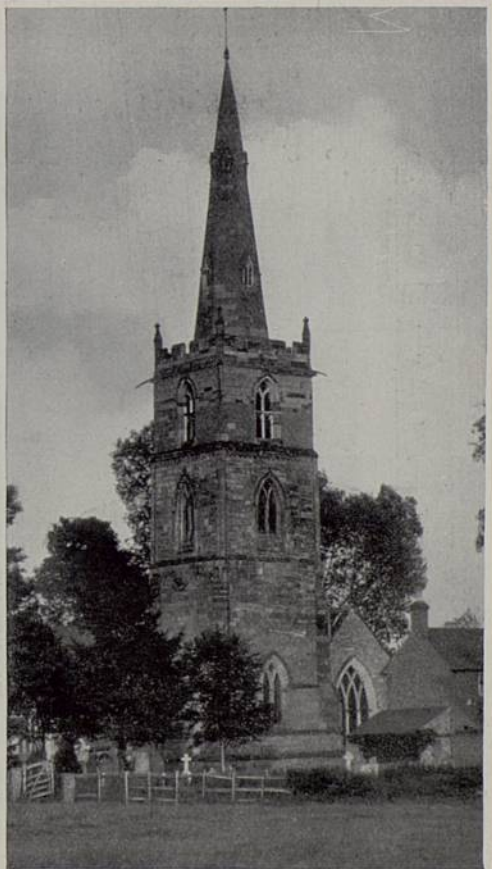
The Series III., IV. and V. Extension lenses are designed to replace the *back* glass of the normal Cooke lenses, and the Series II. and IIA. are designed to replace the *front* glass. The exchange can be effected quite easily, being simply a matter of unscrewing the normal lens and screwing in the Extension.



Taken with normal 6 in. IV. Cooke Lens.



Ditto, with 50 per cent. Extension Lens.



Ditto, with 100 per cent. Extension Lens.

All from same standpoint, without moving the camera.

COOKE PORTRAIT LENSES



SERIES IIA. F/3.5.

THIS remarkable series opens out a new era for portraiture. Hitherto lenses of extreme rapidity specially suitable for portraiture have been of the old R.R. or Petzval type, which can only give sharp definition over the centres of their plates. These new Cooke Lenses, however, are unique in many ways:

1st. Their extreme rapidity (F/3.5) ensures success under the most exacting conditions of subject and lighting.

2nd. Being perfectly corrected anastigmats they will give brilliant definition over much larger plates than those for which they are listed, thus providing the covering power essential for group work.

3rd. By simply revolving the front portion of the mounts, any desired degree of diffusion may be readily introduced.

Code.	Focus.	Size of Plate.	Diameter of Flange Screw.	Diameter of Hood.	PRICE with Flange.
ENOMANCIA	10½	7×5	3½	3.6	£ 16 0 0
ENOMETRO	12	{ For Cabinet Portraits or whole plates for group work.	4	5.25	20 0 0

SERIES II. F/4.5.

These ultra rapid anastigmats are designed for the finest portraiture, and for subjects demanding extreme speed. Like other Cooke Lenses they produce sharp images, and are quite free from that peculiar streakiness of marginal definition found in so many other makes of rapid lenses.

They are provided with an improved means of diffusion adjustment, which is operated from the front of the camera. This enables the photographer to secure at will uniform sharp definition, or to introduce any required softness evenly throughout the plate.

Code.	Approximate Equivalent Focus.	Size of Plate.	Diameter of Flange Screw.	Diameter of Hood.	PRICE with Flange.
FENIGENAS	10½	8½×6½	2¾	2.80	£ 13 17 6
FECHUVIAS	13	10×8	3½	3.60	21 4 0
ENOTAREMUR	14½	10×8	4	5.25	26 5 0
ENNACANTO	*16	12×10	4½	5.25	42 5 0
FILLODANGO	*18	15×12	5	5.40	56 6 0

* Made to order only.

For Smaller Lenses in these Series, see page 4.



Photo by

C. Donaldson, Cambuslang.

TAKEN WITH A COOKE PORTRAIT LENS.

Series IIA.—F/3.5.

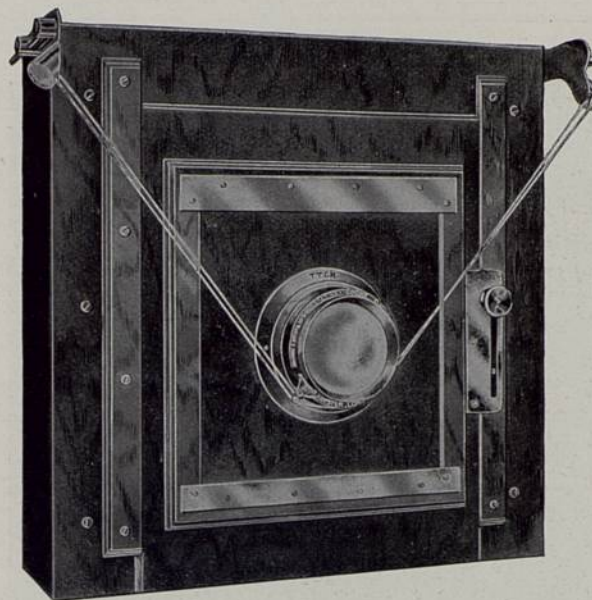


Photo by

C. Donaldson, Cambuslang.

TAKEN WITH A COOKE PORTRAIT LENS.

Series II A.—F/3.5.



Cooke Studio Lenses.

SERIES VI.
APERTURE F/5.6.

IN view of the recent rapid advance in artistic portraiture, it is an advantage for the professional photographer in the studio to have complete control WHILE FOCUSING, not only of the definition of the lens, but also of its iris diaphragm.

The Cooke Studio Lenses meet this demand. As shown in the illustration, they are supplied in mounts with rotating rings for diffusing the focus and working the diaphragm from the back of the camera by means of pulleys and cords. There is no need for the operator to pass to the front of the camera.

When once the most pleasing degree of diffusion has been obtained, it may be repeated as often as desired by simply bringing the pointer engraved on the lens to the same place on the engraved scale.

These lenses have a full aperture of F 5.6, and are quite rapid enough for most subjects. They are specially suitable for large groups because they have greater depth of focus than lenses of larger aperture.

DIMENSIONS ARE IN INCHES.

Approximate Equivalent Focus.	Plate covered at F/5.6.	Plate covered at F/16.	Diameter of Flange Screw.	Diameter of Hood	PRICE with Flange, Pulleys and Cords.		
					£	s.	d.
13	10 x 8	14 x 11	3	2'8	15	15	0
16	12 x 10	15 x 12	3½	3'3	22	5	6
18	15 x 12	18 x 16	4	3'6	25	14	0

Below are given the required distances from sitter to lens for the various sizes of portraits.

FOCUS.	C.D.V.				CABINET.				PANEL.			
	Full Length.		Bust.		Full Length.		Bust.		Full Length.		Bust.	
Inches.	Ft.	Ins.	Ft.	Ins.	Ft.	Ins.	Ft.	Ins.	Ft.	Ins.	Ft.	Ins.
13	27	0	13	6	17	6	9	0	12	0	6	0
16	35	0	17	6	22	6	11	6	14	6	7	0
18	39	0	20	0	25	0	13	0	16	0	8	0



PRIZE PICTURE.

TAKEN WITH A 4 INCH SERIES VIIA. COOKE PRIMOPLANE LENS.

COOKE PRIMOPLANE LENSES



WIDE ANGLE ANASTIGMATS.

FULL APERTURE

F/6.5.

SERIES VIIA.

THESE are a development of Cooke Lenses designed specially for wide-angle work at a large aperture. Architecture, dim interiors, and other subjects for which wide-angle lenses are used may be accurately focussed and the exposures made at large apertures. Where great depth is required, however, it is necessary to use a smaller stop.

Those who have experienced the difficulty and sometimes the impossibility of accurate focussing with the usual small aperture wide-angle rectilinear lenses will appreciate the time, materials and annoyance saved by the Cooke Primoplane Lenses.

Though these Lenses are primarily designed for wide-angle work, there is nothing to prevent them being used for ordinary work on small sizes of plates.

DIMENSIONS ARE IN INCHES.

Code.	Approximate Equivalent Focus.	Focus measured from Flange Shoulder.	Size of Plate.	Diameter of Flange Screw.	Diameter of Hood.	PRICE with Flange.
ENOTESCIS	3	...	4 $\frac{1}{4}$ × 3 $\frac{1}{4}$	1.25	1.40	£ s. d. 3 15 0
ENORMEMENT	4	3.77	5 $\frac{1}{2}$ × 3 $\frac{1}{2}$	1.25	1.40	3 17 6
ENNUYASSES	5	4.80	7 × 5	1.5	1.60	4 2 0
ENNUYERAI	6	5.68	8 $\frac{1}{2}$ × 6 $\frac{1}{2}$	1.5	1.60	4 12 0
ENNUYEUX	7	6.74	10 × 8	1.75	1.80	5 12 0
ENOTESCO	*8	...	12 × 10	2	1.90	7 10 0

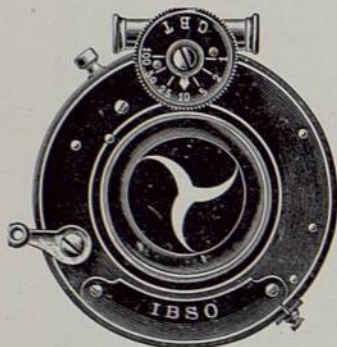
* Made to order only.

COOKE LENSES

FITTED TO SHUTTERS.

Cooke Lenses can be fitted to most of the well-known between-lens shutters, illustrated below, but we would emphasize the need of this being done by us to secure the proper adjustment of the lenses.

We supply these shutters fitted with Cooke Lenses at the prices given on the next page. We also fit such combinations to customers' own Kodaks and other cameras.

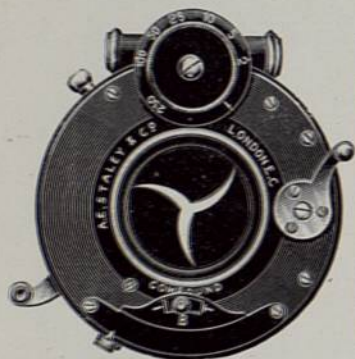


THE "IBSO."

These two shutters give time, bulb, and instantaneous exposures from 1 second to 1/100th second. Each has a separate iris diaphragm. They have the advantage of being ever set.



THE "AUTOMAT."



THE "COMPOUND."

Time, bulb, and instantaneous exposures are provided in the smaller sizes, from 1 second to 1/250th second.

Our charges for fitting customers' own Cooke Lenses to any of these shutters are as follows:—

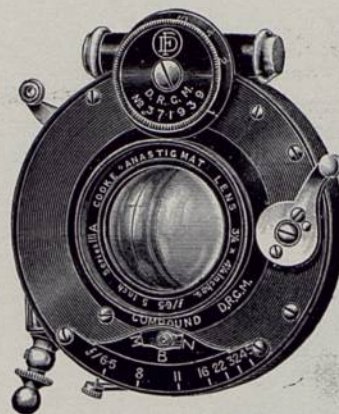
	£ s. d.
If we supply shutter	0 10 0.
If customer supplies shutter	- 1 0 0

No fitting charge is made for supplying a new lens to a customer's own shutter.



THE "KOILOS."

Time, bulb, and instantaneous exposures, are provided in the smaller sizes, from 1 second to 1/300th second.



COOKE LENSES

IN
SHUTTERS.

Series.	Approximate, Equivalent Focus	Size of Plate.	COMPOUND.	KOILOS.	IBSO.	AUTOMAT.	
IIA.	Inches.	Inches.	£ s. d.	£ s. d.	£ s. d.	£ s. d.	
	5	4¼ × 3¼	8 8 0	8 8 0	...	8 4 0	
	6	5 × 4	10 0 0	10 0 0	...	9 8 0	
	F/3.5.	7	5½ × 3½	11 10 0	
		8	6½ × 4½	13 5 0	
II.	4	3¼ × 3¼	5 17 0	5 17 0	5 7 0	5 7 0	
	5	4¼ × 3¼	6 17 0	6 17 0	6 2 0	7 1 0	
	5½	4¼ × 3¼	7 13 0	7 13 0	...	7 9 0	
	6½	5 × 4	7 17 6	7 17 6	...	7 13 6	
	F/4.5.	7	5½ × 3½	8 16 6	9 2 6	...	8 10 6
	8	6½ × 4½	9 12 6	9 12 6	...	9 0 6	
	10½	8½ × 6½	17 2 6	
III.	4¼	3¼ × 3¼	5 9 0	5 9 0	4 19 0	4 19 0	
	5	4¼ × 3¼	5 17 0	5 17 0	5 7 0	5 7 0	
	5½	4¼ × 3¼	6 7 0	6 7 0	5 12 0	5 12 0	
	6¾	5 × 4	6 12 0	6 12 0	5 17 0	5 17 0	
	F/6.5.	7½	6½ × 4½	7 14 0	7 12 0	...	7 16 0
	8½	8 × 5	8 11 0	8 11 0	...	8 7 0	
	9½	8½ × 6½	11 2 0	11 2 0	...	11 2 0	
IV.	5	4¼ × 3¼	6 4 6	6 4 6	5 14 6	5 14 6	
	6	5 × 4	6 19 6	6 19 6	6 4 6	7 3 6	
	8	6½ × 4½	8 14 0	8 14 0	...	8 10 0	
	F/5.6.	9½	8½ × 6½	12 5 0	12 5 0	...	11 13 0
V.	7½	6½ × 4½	6 12 0	6 12 0	5 17 0	5 17 0	
	9	8 × 5	7 14 0	7 12 0	...	7 16 0	
	F/8.	11	8½ × 6½	10 5 0	10 5 0	...	10 5 0
	13	10 × 8	13 2 0	13 2 0	

Cooke Process Lenses.

The illustrations in the leading magazines throughout the world are made with Cooke Process Lenses. The reason is that for half-tone and three-colour work they give uniformly well defined images, free from distortion, from fog, and other common defects.



Process lens mounts are specially designed. The lens hood which receives the cap is removable, and the screw-thread then exposed receives the Cooke process prism described below. An iris diaphragm is provided and in front of it is a slot to receive process diaphragms when necessary. This slot may be closed or opened at pleasure merely by revolving the inscription-tube.

Cooke Process Prisms.

Into the manufacture of these prisms are put the finest material and workmanship that money can buy. The accuracy of each surface is guaranteed, while the convenience of the mounting is unique. Standard screw threads are provided: one thread receives the Cooke Process Lens while the other receives the hood of the lens as shown in the illustration. A small lever clamps the prism at the desired angle.

Cooke Process Lenses and Prisms can only be obtained in Great Britain through Messrs. A. W. Penrose & Co., Ltd., 109 Farringdon Road, London, E.C.

T. T. & H. Standard Screw Fittings.

FOR ATTACHING LENSES TO CAMERAS.

This improved screw, which is supplied with all our lenses and flanges, adds greatly to the convenience and comfort of using them by abolishing all the trouble usual in putting two such screws together.

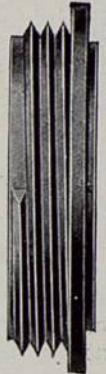
As shown in the illustration, the screw on the lens (like that on the flange) is formed with the thread commencing abruptly at a point which is plainly marked upon each by an arrow.

To screw the two together, the arrow marks are placed in line, and "the engagement is affected with perfect smoothness and without a hitch." Exactly three turns bring the lens home; while, in removing it, as three turns release it, there is no fear of dropping the lens through uncertainty in this respect.

A further improvement lies in the fact that any number of T. T. & H. lenses fitting the same flange will screw home with their diaphragm indexes in one position convenient for use.

The sizes of the screws used are of the following simple diameters:— $1\frac{1}{4}$, $1\frac{1}{2}$, $1\frac{3}{4}$, 2, $2\frac{1}{4}$, $2\frac{1}{2}$, $2\frac{3}{4}$, 3, $3\frac{1}{2}$, 4, $4\frac{1}{2}$, 5 and 6 inches (the Standards of the Royal Photographic Society), and as great care is taken in making and gauging the screws, we guarantee all our work to be interchangeable with other fittings of our make.

To encourage the universal adoption of standard interchangeable fittings we re-model the fittings of other lenses, at nominal prices.



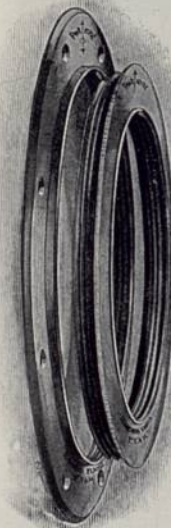
Standard Flanges.

FOR ATTACHING LENSES TO CAMERAS.
R.P.S. STANDARDS.

These flanges possess the important advantages described above. Their Screws are formed within one to two thousandths of an inch above the normal sizes, and are thus freely interchangeable.

All T. T. & H. lens mounts are supplied with these flanges.

Diameter of Screw in inches	$1\frac{1}{4}$	$1\frac{1}{2}$	$1\frac{3}{4}$	2	$2\frac{1}{4}$	$2\frac{1}{2}$	$2\frac{3}{4}$	3	$3\frac{1}{2}$	4	$4\frac{1}{2}$	5	6
Full Diameter of flange	1'8	2'1	2'4	2'7	3	3'3	3'6	3'9	4'6	5'55	6	6'5	7'85
PRICE	2/-	2/-	2/-	2/-	2/6	2/6	3/-	3/-	3/6	4/-	4/6	5/-	6/-



Standard Adapters.

TO CARRY LENSES IN FLANGES LARGER THAN THEIR OWN.
R.P.S. STANDARDS.

These adapters all contain the improved facilities for engagement and release, with the advantage of holding all lenses with their diaphragm indexes in one position convenient for use.

They are guaranteed interchangeable with other T. T. & H. lens fittings.

Diameter in inches	$1\frac{1}{4}$	$1\frac{1}{2}$	2	$2\frac{1}{4}$	$2\frac{1}{2}$	$2\frac{3}{4}$	3	3	$3\frac{1}{2}$	4	5	6	
External Screws ...	$1\frac{1}{4}$	$1\frac{1}{2}$	2	$2\frac{1}{4}$	$2\frac{1}{2}$	$2\frac{3}{4}$	3	3	$3\frac{1}{2}$	4	5	6	
Internal Screws ...	$1\frac{1}{4}$	$1\frac{1}{2}$	$1\frac{1}{2}$	$1\frac{3}{4}$	2	2	$2\frac{1}{4}$	$2\frac{1}{2}$	$2\frac{3}{4}$	3	$3\frac{1}{2}$	4	5
PRICE	2/-	2/-	2/-	2/-	2/6	2/6	3/-	3/-	3/6	3/6	4/-	5/-	6/-



Standard Dust Caps (Metal).

These caps are for covering the back glasses of lenses when not in use, to protect them from dust and injury. Having the standard screws, they will fit any of the lenses which have similar flange screws. When ordering, say what lenses the caps are to fit, as the depths vary.

Diameter of Screw in inches.	1 1/4	1 1/2	1 3/4	2	2 1/4	2 1/2	3
PRICE	2/-	2/-	2/-	2/-	2/6	2/6	3/-

Standard Lens Caps. (Morocco),

The cap fittings of all lenses in this list are made to standards, and extra caps, covered with Morocco leather, are supplied at the following prices.

In case of doubt as to the size, it is best to send a narrow strip of paper, cut to fit round the hood with its ends meeting nicely.

Diameter of Hood or fitting in inches.	1'1	1'15	1.25	1'3	1'35	1'4	1'45
PRICE.	1/2	1/2	1/3	1/3	1/3	1/3	1/3

Diameter of Hood or fitting in inches.	1'6	1'65	1'8	2	2'1	2'3	2'5
PRICE.	1/4	1/4	1/4	1/6	1/8	1/10	2/-

Diameter of Hood or fitting in inches.	2'8	3	3'3	4	4'25	5	6
PRICE.	2/2	2/4	2/6	2/8	3/-	3/6	4/-

Caps of other sizes are charged according to cost.

Isochromatic Screens.

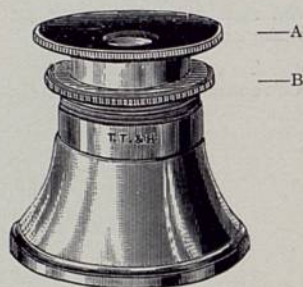
From Optically worked Jena Glass.

No. 1. Designed to increase the exposure approximately 3 times.

No. 2. Designed to increase the exposure approximately 6 times.

Diameter up to.	1in.	1 1/4	1 1/2	1 3/4	2 1/8	2 3/8
PRICE Screen only.	10/-	12/6	15/-	17/6	22/6	27/6
Morocco Case. Velvet Lined.	2/6	2/6	3/-	3/6	4/-	5/-

Focussing Magnifier.



This Magnifier, for examining the definition of an image on the camera screen, is arranged to close like a telescope for compactness.

The screw ring B forms an adjustable stop to limit the withdrawal of the eyepiece A to suit the sight of the user.

PRICE - 4/-

T. T. & H. Spirit Levels.

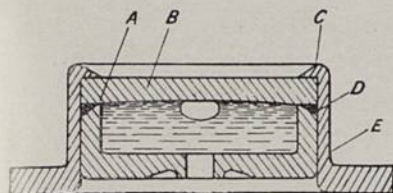
FOR CAMERAS AND OTHER PURPOSES.

A Spirit Level on the camera is always useful and often necessary. Buildings and other objects must be upright in the photograph, and to secure this, the plate must be vertical during exposure. The spirit level instantly shows when it is so. Mere guessing is fatal to good work.

On a hand camera it is best to place levels beside the finders, one for vertical and one for horizontal views. On a stand camera the level should be fixed to the swing back.

Circular Spirit Level.

The design of this level prevents the leakage which occurs in the course of time with ordinary levels.



As shown by the sectional view, the glass B is united to the chamber A by the elastic ring D, and the outer jacket E which holds these parts together may be subjected to ordinary rough usage without affecting the vital parts.

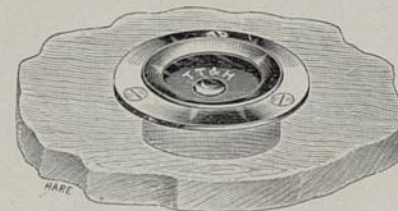
All levels are tested for leakage under high pressure.

The cases are of brass, either bright or bronzed, and are attached to the camera by small screws provided.



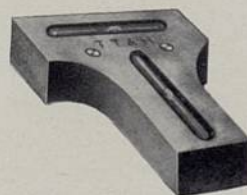
To project outside the Camera.
No. 1. Finished Bright. }
No. 1b " " Black. }

Full Size



To lie flush with the outside.
{ No. 1 F. Finished Bright.
{ No. 1 Fb. " " Black.

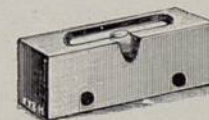
PRICE 1/-



DOUBLE TUBE LEVEL.

Of Improved Design.
No. 4 Bright Lacquered - 3/-
No. 4 a. Nickelled - 3/-

Tube Levels.



SINGLE TUBE LEVEL.

1-in. x 3/8-in. x 1/4-in.
To be screwed to face or side of swing back.
No. 5. Brass - 1/6

Contents.

	PAGE		PAGE
Adapters - - -	25	Dust Caps - - -	26
Caps (Morocco) - - -	26	Flanges - - -	25
Cooke Lenses, Series IIA. 4 & 16		Focussing Magnifier - - -	26
" " II. - 4 & 16		Isochromatic Screens - - -	26
" " III. - 7	7	Levels (Spirit) - - -	27
" " IIIA. - 9	9	Primoplane Cooke Lenses,	
" " IV. - 5	5	VIIA. - - -	21
" " V. - 11	11	Prisms - - -	24
" in Sunk Mounts	12	Shutters - - -	-22 & 23
Cooke Extension Lenses	13 & 14	Screens, Isochromatic - - -	26
" Portrait Lenses	16 & 19	Spirit Levels - - -	27
" Process Lenses - - -	24	Terms - - -	28
" Studio Lenses,			
Series VI. - - -	19		

Terms.

CARRIAGE. All orders exceeding 5/- in value are sent carriage paid to any part of the United Kingdom.

LENSES ON APPROVAL. We are always willing to send any Lens on seven days' approval, in exchange for a cash deposit equal to its value.

DIMENSIONS. The dimensions in this Catalogue are in inches, but can be converted into millimetres by multiplying by 25'4. Focal lengths and sizes of plates are engraved in millimetres when so ordered.

FOREIGN AGENTS. We have representatives in almost every country, and will be glad to furnish, on request, the name and address of the nearest Cooke Lens Agent.

COMPLAINTS.

Every instrument manufactured by us is rigorously tested before being issued, and complaints from clients are rare. We will however give our best attention to any complaints but should they prove unfounded, we reserve to ourselves the right of charging for our investigations.

We do not accept responsibility for the constructional details of goods of other makes supplied by us.

A SEPARATE BOOKLET:

The Principles of a Lens Action

BY

WILLIAM TAYLOR, F.R.P.S.

Explains in a simple way the principles which govern the formation of images by lenses, and will be gladly sent to any photographer free on request.

GH